

PSCM PHE

Phenolic Bonded to Plasterboard

The PSCM insulating laminates are designed as a simple effective way to improve the thermal efficiency in both walls and roof applications. They are fully applicable with Part L of the building regulations.





PHENOLIC FOAM BONDED TO PLASTERBOARD BENEFITS

- All thicknesses readily available
- Simple solution to upgrading walls and roofs
- Quick and easy to install
- Can be used for both newbuild and refurb
- A simple way to meet building regulations
- Cost effective return

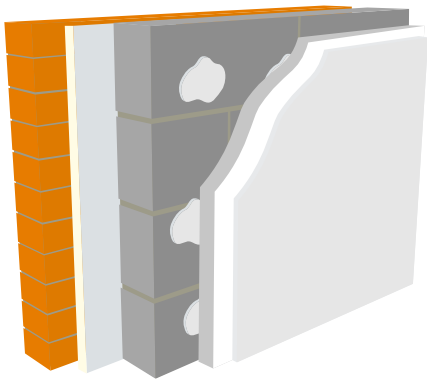
TECHNICAL SPECIFICATIONS

Product Code & Size	Description	Overall Thickness	Foam Thickness	Plasterboard Thickness	Sheets per Pallet	m2 per Board	Thermal Resistance R-value	U-value Fixed Batons (W/m2K)	U-value Dot & Dab (W/m2K)
PSCM PHE 1.2 x 2.4	Phenolic Bonded to Plasterboard	30mm	20mm	9.5mm	74	2.88	0.990	0.021	0.020
		35mm	25mm	9.5mm	66	2.88	1.228	0.021	0.020
		37.5mm	25mm	12.5mm	58	2.88	1.240	0.021	0.020
		40mm	30mm	9.5mm	55	2.88	1.466	0.021	0.020
		42.5mm	30mm	12.5mm	52	2.88	1.478	0.021	0.020
		50mm	40mm	9.5mm	44	2.88	1.943	0.021	0.020
		52.5mm	40mm	12.5mm	42	2.88	1.955	0.021	0.020
		60mm	50mm	9.5mm	36	2.88	2.538	0.021	0.020
		62.5mm	50mm	12.5mm	35	2.88	2.550	0.021	0.020
		70mm	60mm	9.5mm	32	2.88	3.038	0.021	0.020
		72.5mm	60mm	12.5mm	30	2.88	3.050	0.021	0.020
		80mm	70mm	9.5mm	28	2.88	3.538	0.021	0.020
		82.5mm	70mm	12.5mm	24	2.88	3.550	0.021	0.020

The insulation used has a thermal performance of 0.021 W/m.K / 0.020 W/m.K

Calculations are based on a 215mm thick solid brickwork wall and includes a 2mm plaster skim coat. Timber battens are 25x50mm at 600mm Centres

FIXING INSTRUCTIONS FOR DOT AND DAB



- For bonding PSCM range to a wall use a proprietary gypsum based adhesive.
- Please follow the manufacturers instructions. As per manufacturers recommendations apply a continuous ribbon of adhesive around any openings.
- Apply 3 vertical rows of adhesive dabs to the walls at 300mm centres. Also insure that there is a continuous bead at the bottom and top.
- After the adhesive has set fix a minimum of 2 insulation anchors through the board into the wall. They must go into the masonry by a minimum of 30mm.

FIXING INSTRUCTIONS FOR MECHANICAL FIXING

- Fix to the wall treated batons 50mm x 25mm at a maximum of 600mm centres. Also fit horizontal batons at both floor and ceiling level.
- Then fit the PSCM board using drywall screws at 150mm centres. Always insure that they penetrate the batons by 25mm.
- When installing boards to rafters fix them at right angles to the timbers. To ensure a solid finish bridging pieces are to used inbetween the rafters.

